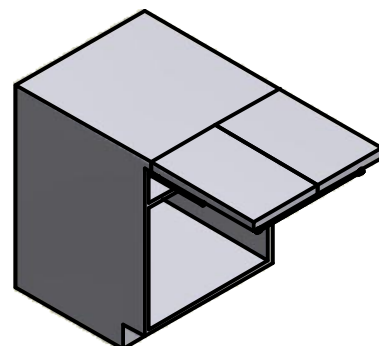


FLIP TOP

ISTRUZIONI DI MONTAGGIO ASSEMBLY INSTRUCTIONS

MODELLI:
MODELS:

411/78.1800.25 FLIP TOP 450
411/78.1810.25 FLIP TOP 600
411/78.1820.25 FLIP TOP 900
411/78.1830.25 FLIP TOP 1200



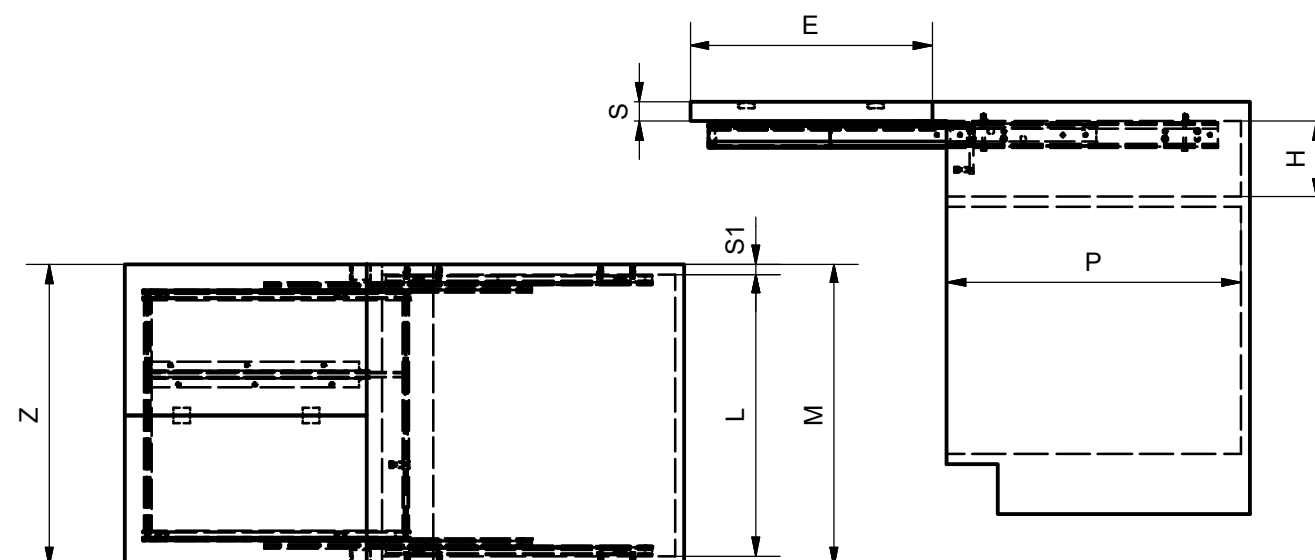
CONTENUTO DELLA CONFEZIONE INCLUDED IN THE PACKAGING

- GUIDE - *SLIDES*
- TRAVERSO (x2) - *BAR (x2)*
- TUBO - *ROD*
- CANOTTO - *CONNECTION ROD*
- SUPPORT - *SUPPORT*

SACCHETTO ACCESSORI - *ACCESSORIES*

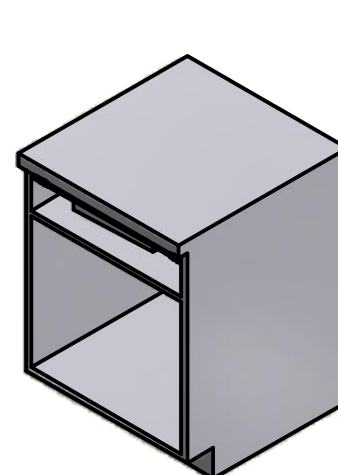
- A. Chiave esa. n.5 - *n.5 Allen key*
- B. Chiave esa. n.3 - *n.3 Allen key*
- C. Piastra - *Plate (x 2)*
- D. Distanziale - *Side spacer (x 20)*
- E. Bussola M6 - *M6 12x8 mm brass bush (x 12)*
- F. Vite TPS M6x10 - *M6x10 Tapered screw (x 2)*
- G. Vite TCBCE M5x10 - *M5x10 ISO 7380 screw (x 8)*
- H. Vite TCCE M6x12 - *M6x12 Allen head screw (x 16)*
- I. Vite TCCE M6x60 - *M6x60 Allen head screw (x 4)*

DIMENSIONI GENERALI GENERAL SIZES

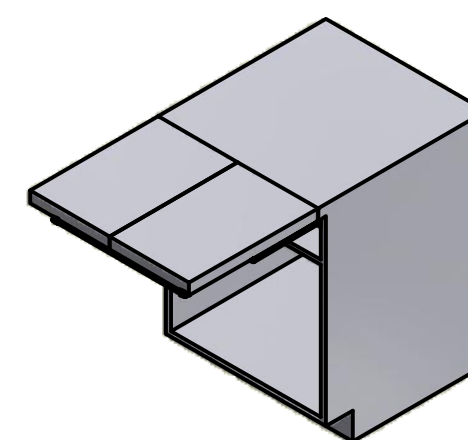
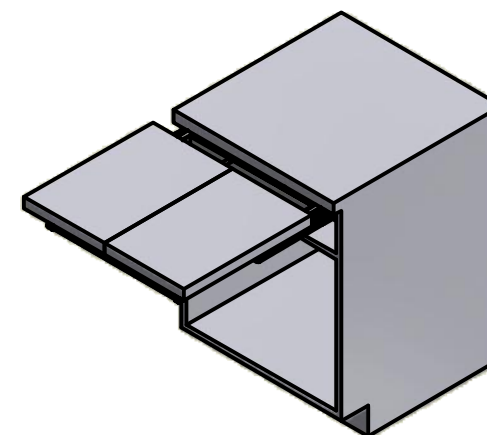


DIMENSIONE - DIMENSION	SIMBOLO - SYMBOL	mm
ALTEZZA - HEIGHT	H	MIN: 120
PROFONDITA' - DEPTH	P	MIN: 540
LARGHEZZA - WIDTH	L	MIN: 410 MAX: 1170
MODULO - MODULE	M	450 / 600 / 900 / 1200
SPESSORI PIANO - TOP THICKNESS	S	MIN: 16
SPESSORI SPALLE - SIDE THICKNESS	S1	15-20
LARGHEZZA PIANO - TOP WIDTH	Z	M-5
APERTURA PIANO - TOP OPENING	E	480

SEQUENZA DI FUNZIONAMENTO FUNCTIONING STEPS



CHIUSO
CLOSED

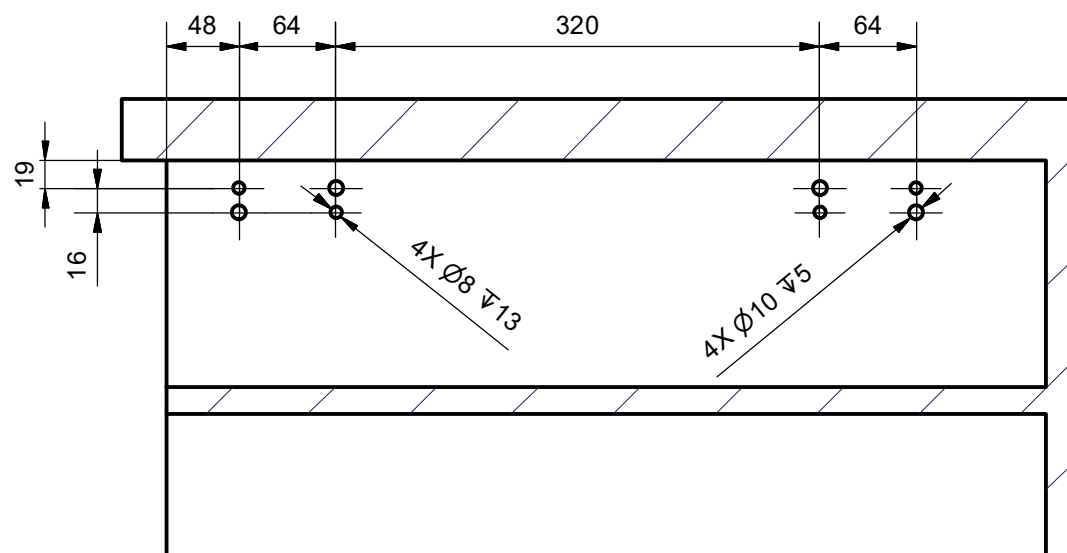
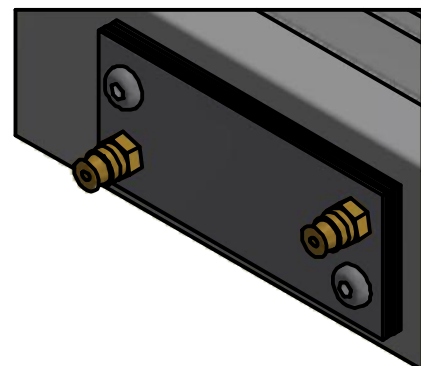


APERTO
OPENED

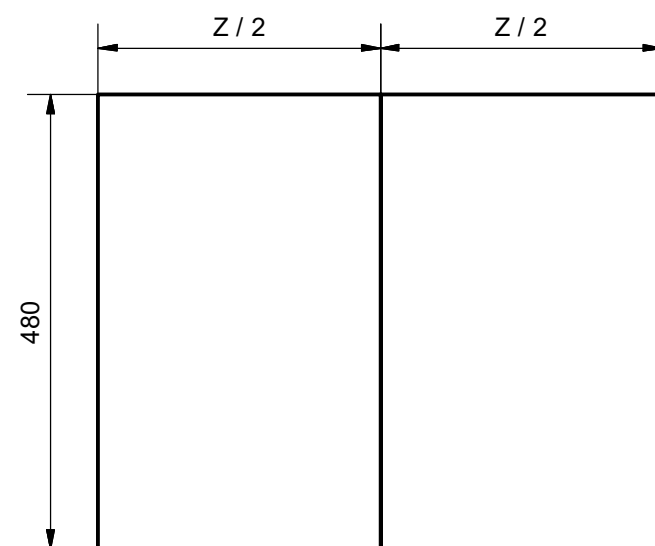
POSIZIONE FORI HOLES POSITION

Per spalle di spessore < 20 mm usare i distanziali fissandoli sulle guide esterne.
For cabinet sides < 20 mm use spacers fixing them on the external slides

- Spalla/Side 20 mm - 0 distanziali/spacers
- Spalla/Side 19 mm - 1 distanziale/spacer
- Spalla/Side 18 mm - 2 distanziali/spacers
- Spalla/Side 17 mm - 3 distanziali/spacers
- Spalla/Side 16 mm - 4 distanziali/spacers
- Spalla/Side 15 mm - 5 distanziali/spacers



DIMENSIONI PIANO TOP SIZES



MONTAGGIO (SUGGERITO) ASSEMBLY (PROPOSED)

