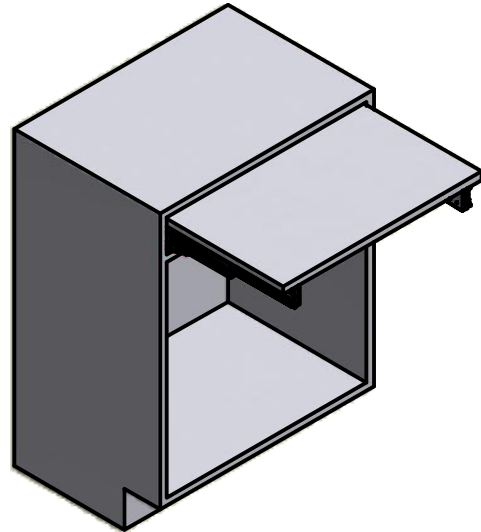


SHOT+39

ISTRUZIONI DI MONTAGGIO ASSEMBLY INSTRUCTIONS

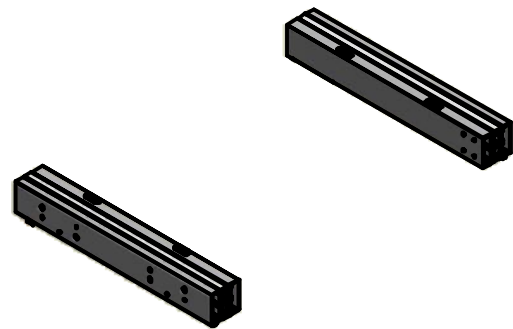
MODELLO:
MODEL:

411/39.1130.25



CONTENUTO DELLA CONFEZIONE INCLUDED IN THE PACKAGING

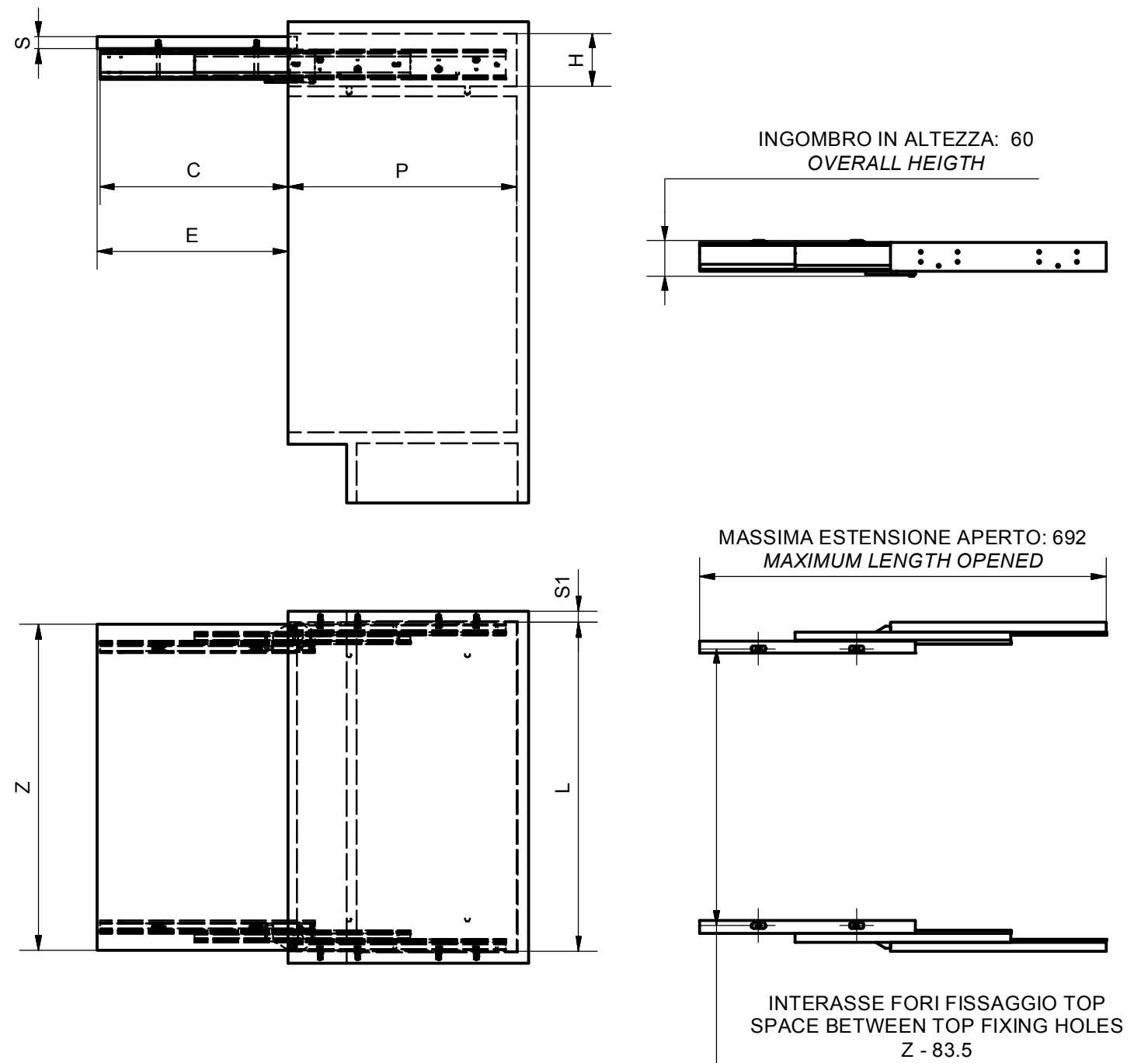
GUIDE
SLIDES



SACCHETTO ACCESSORI - ACCESSORIES

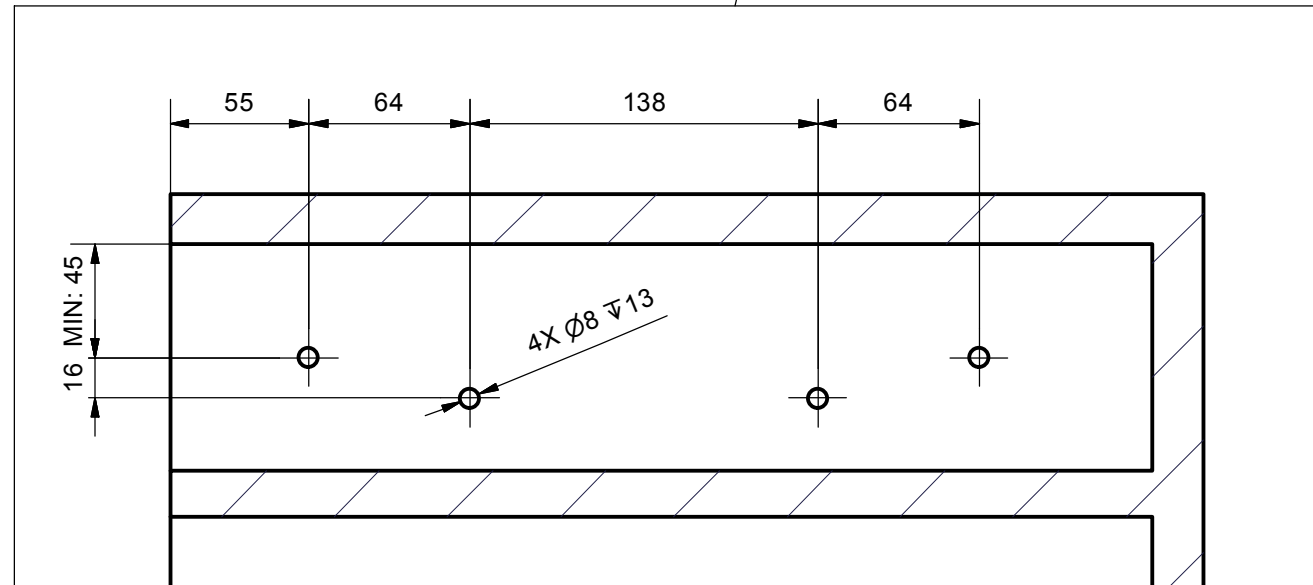
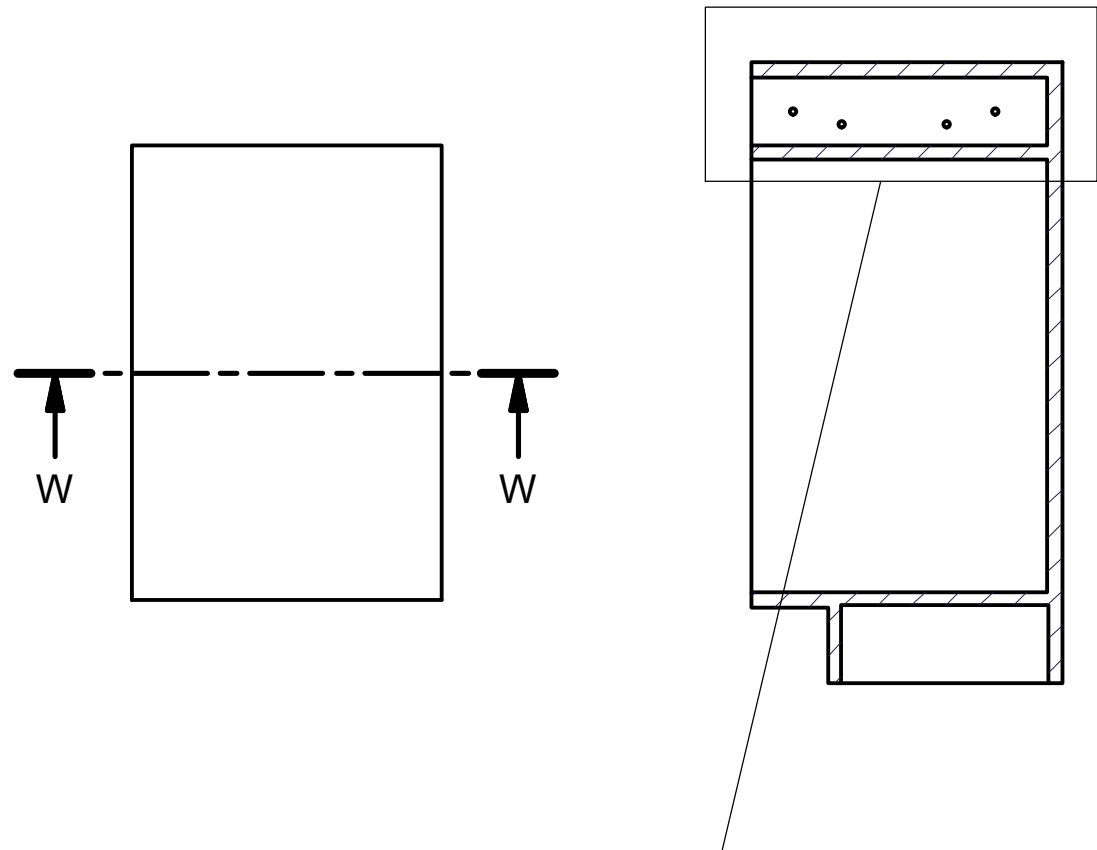
- A. Chiave esa. n.5 - n.5 Allen key
- B. Chiave esa. n.4 - n.4 Allen key
- C. Squadra - Bracket (x 2)
- D. Bussola M6 12x8 mm - M6 12x8 mm bush (x 12)
- E. Vite truciolare 3.5x16 - 3.5x16 FHP screw(x 4)
- F. Vite truciolare 3.5x12 - 3.5x12 FHP screw (x 2)
- G. Vite TCBC M5x10 - M5x10 BHCS screw (x 4)
- H. Vite TCCE M6x12 - M6x12 SHCS screw (x 8)
- I. Vite TPS M6x60 - M6x60 FHCS screw (x 4)

DIMENSIONI GENERALI GENERAL SIZES

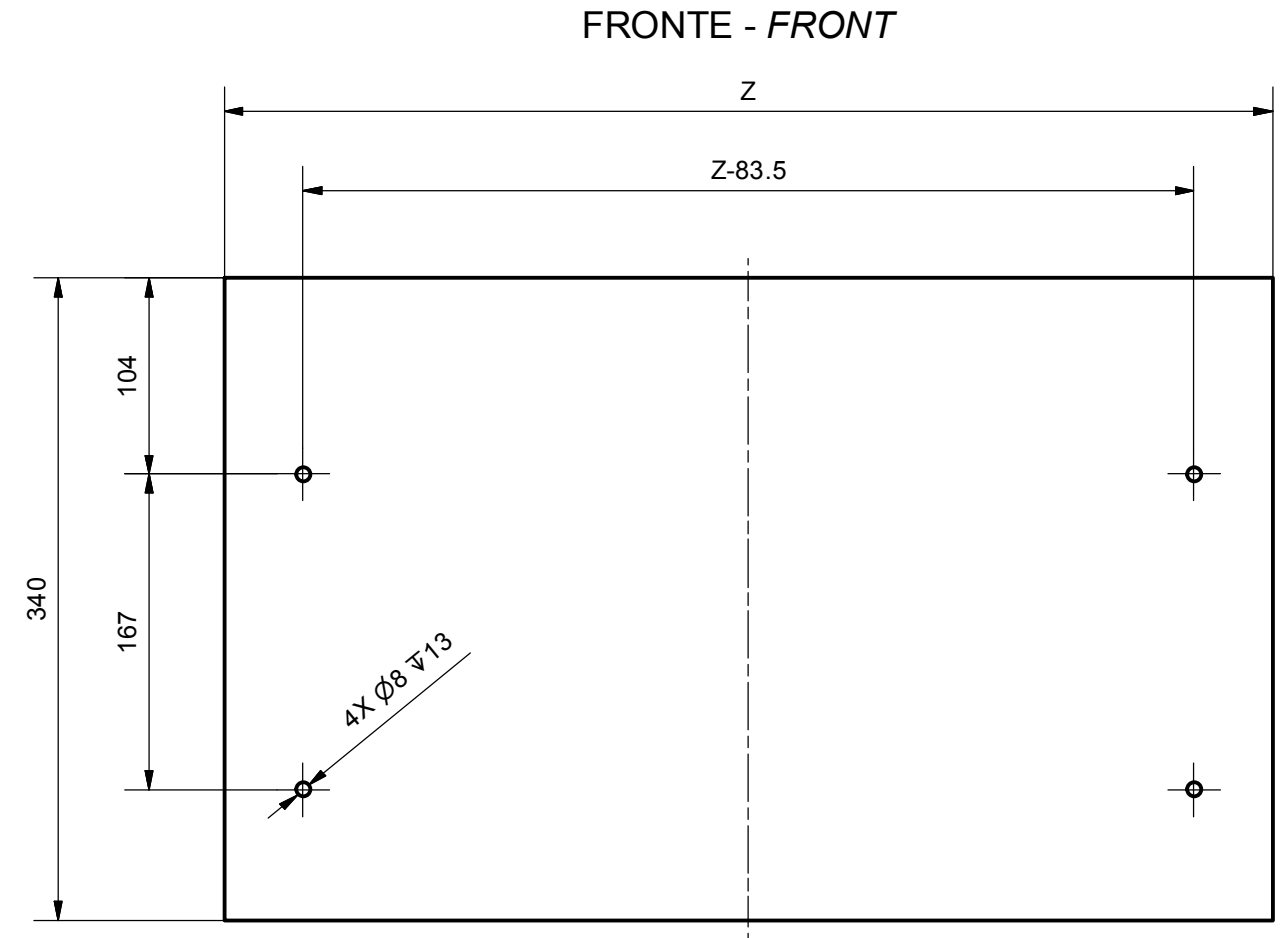


DIMENSIONE - DIMENSION	SIMBOLO - SYMBOL	mm
ALTEZZA - HEIGHT	H	MIN: 90
PROFONDITA' - DEPTH	P	MIN: 390
LARGHEZZA - WIDTH	L	MIN: 410 MAX: 1170
SPESSORI PIANO - TOP THICKNESS	S	MIN: 16
SPESSORI SPALLE - SIDE THICKNESS	S1	15-20
LARGHEZZA PIANO - TOP WIDTH	Z	L - 5
APERTURA PIANO - TOP OPENING	E	325
APERTURA MECCANISMO - MECHANISM OPENING	C	320

POSIZIONE FORI FISSAGGIO
MECCANISMO
HOLES FOR MECHANISM
POSITION



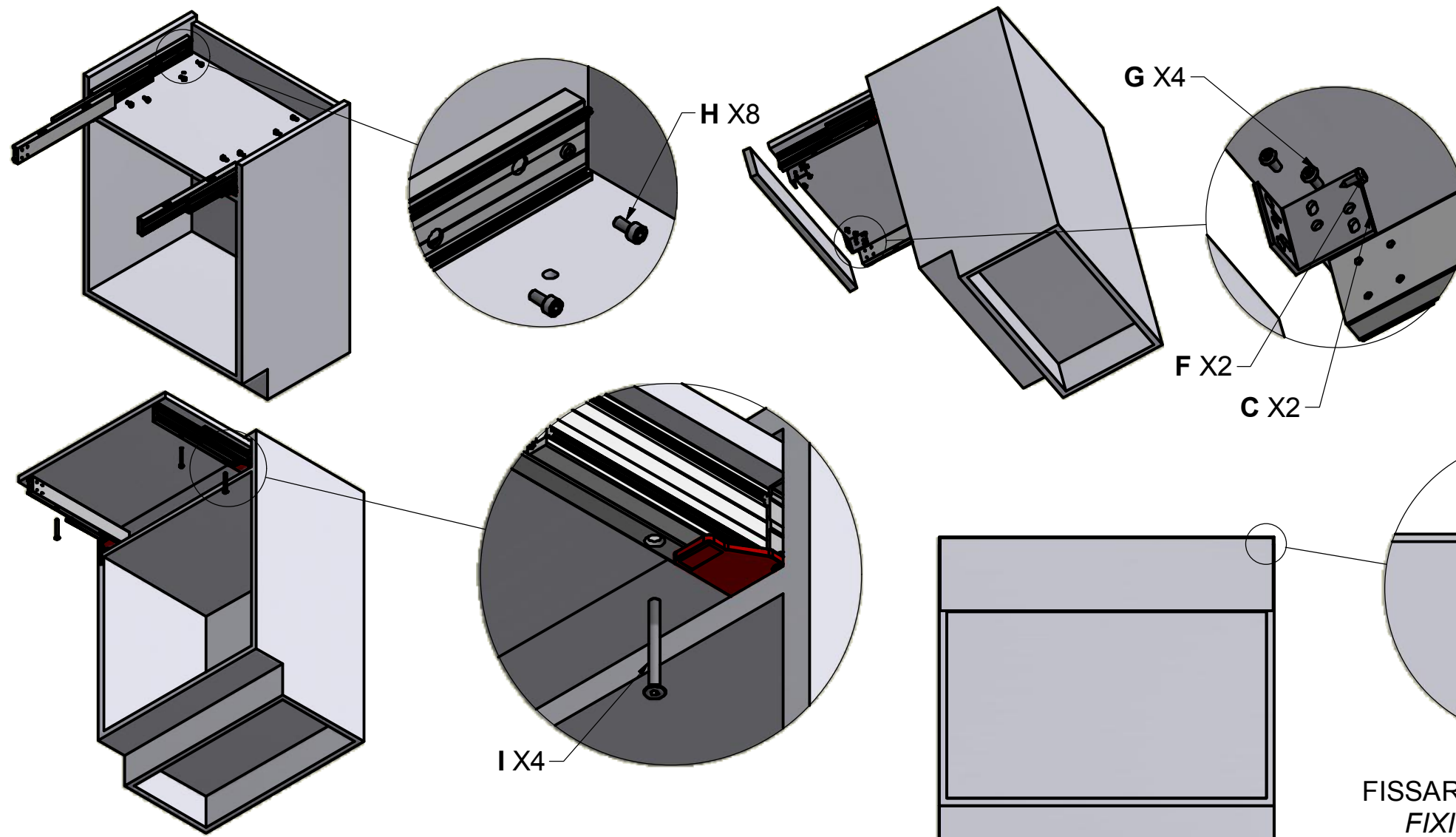
DIMENSIONI PIANO
TOP DIMENSIONS



VISTA DAL BASSO - *BOTTOM VIEW*

D. Bussola M6 12x8 mm - *M6 12x8 mm bush (x 12)*

MONTAGGIO DEL MECCANISMO MOUNTING OF THE MECHANISM



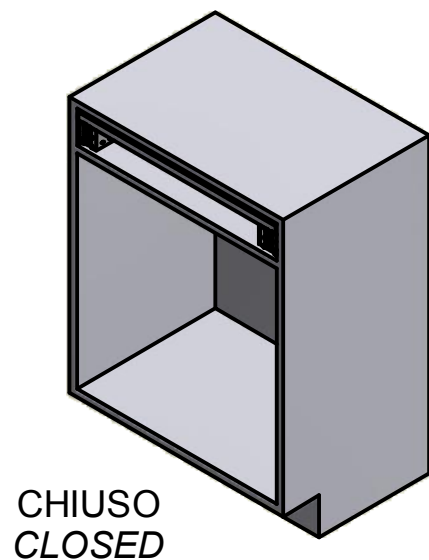
SACCHETTO ACCESSORI - ACCESSORIES

- A. Chiave esa. n.5 - n.5 Allen key
- B. Chiave esa. n.4 - n.4 Allen key
- C. Squadra - Bracket (x 2)
- D. Bussola M6 12x8 mm - M6 12x8 mm bush (x 12)
- E. Vite truciolare 3.5x16 - 3.5x16 FHP screw (x 4)
- F. Vite truciolare 3.5x12 - 3.5x12 FHP screw (x 2)
- G. Vite TCBCCE M5x10 - M5x10 BHCS screw (x 4)
- H. Vite TCCE M6x12 - M6x12 SHCS screw (x 8)
- I. Vite TPS M6x60 - M6x60 FHCS screw (x 4)

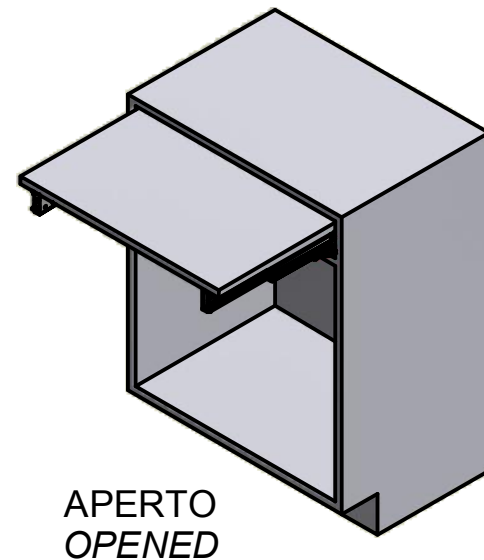
REGOLARE POSIZIONE
FRONTALE
SET FRONT POSITION

FISSARE FRONTALE CON G. VITE TRUCIOLARE 3.5X16
FIXING FRONT WITH CHIPBOARD SCREW 3.5X16

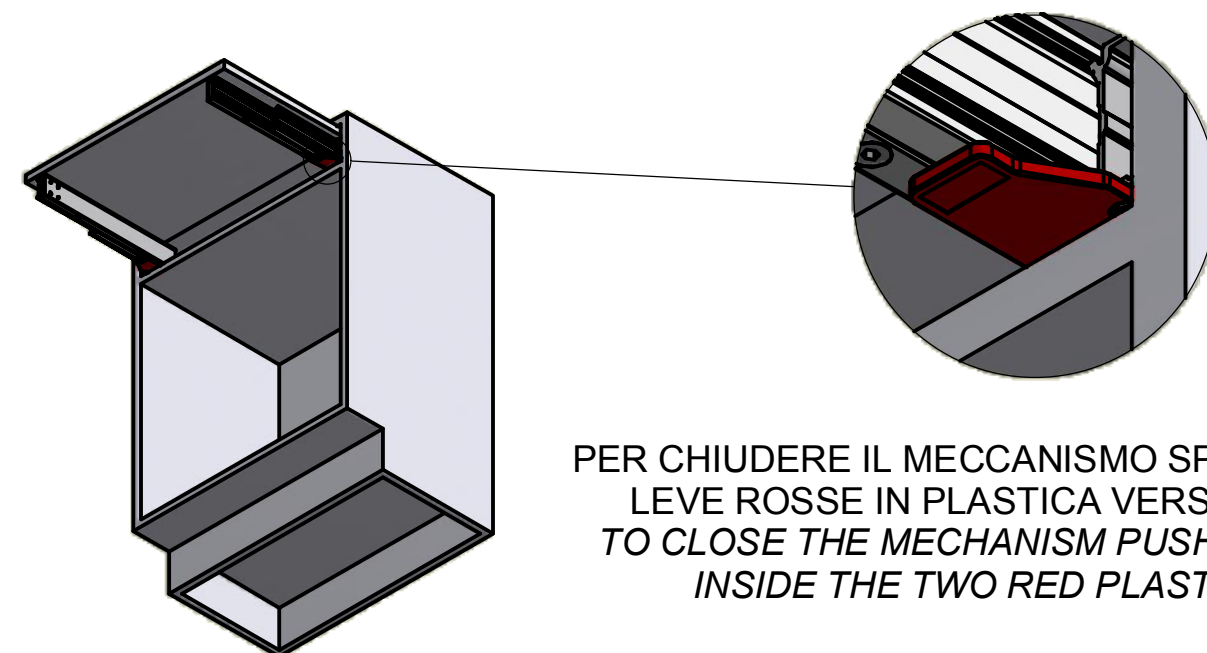
SEQUENZA DI FUNZIONAMENTO FUNCTIONING STEPS



CHIUSO
CLOSED



APERTO
OPENED



PER CHIUDERE IL MECCANISMO SPINGERE LE DUE
LEVE ROSSE IN PLASTICA VERSO L'INTERNO
TO CLOSE THE MECHANISM PUSH TOWARD THE
INSIDE THE TWO RED PLASTIC PARTS